

Silicon Valley Regional Data Trust

Investing in the Future of
Children, Families and
Communities





2013 NSF Grant Awarded to UC Santa Cruz



“Building Community Capacity for
Data-Intensive Research in Education”



Santa Clara County
Office of Education



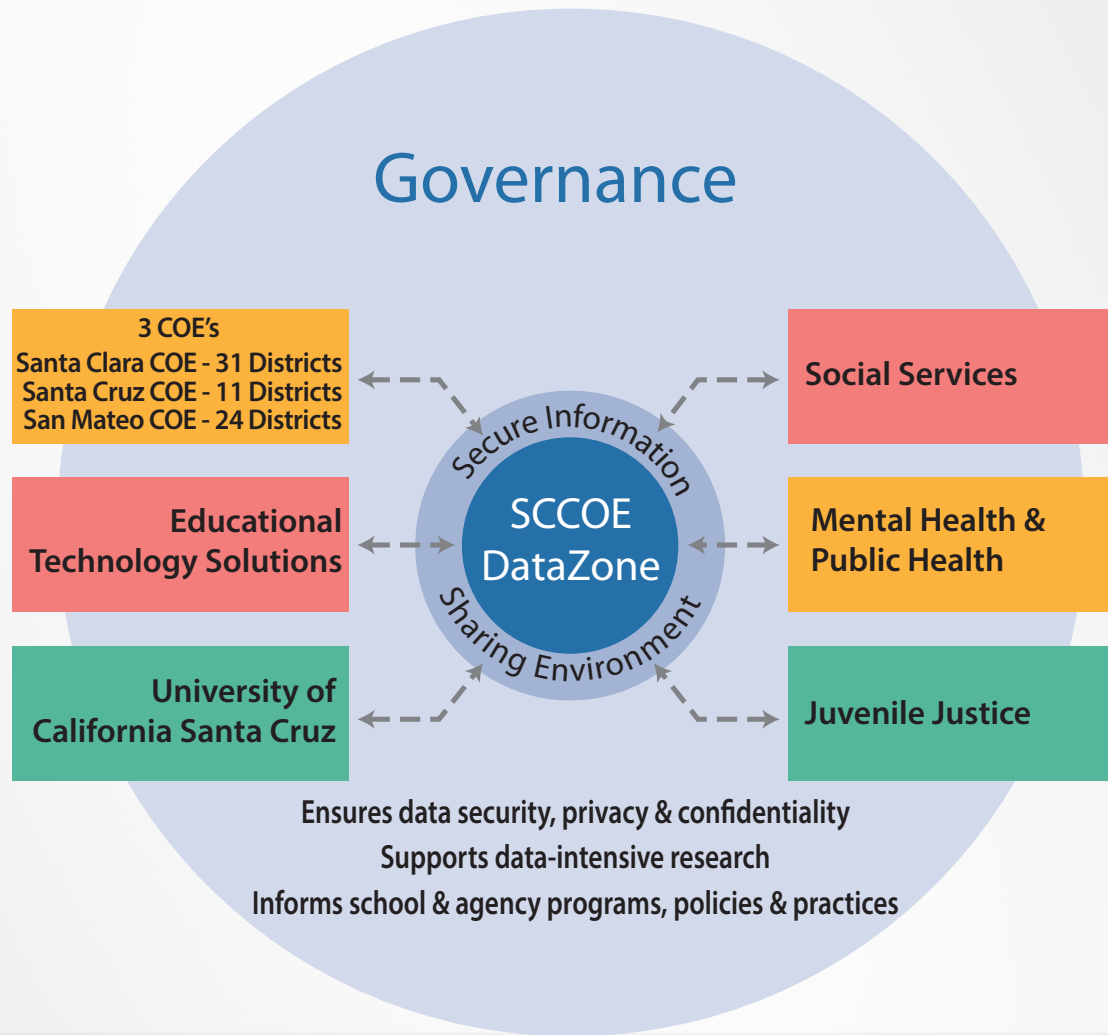
Regional Context by the Numbers



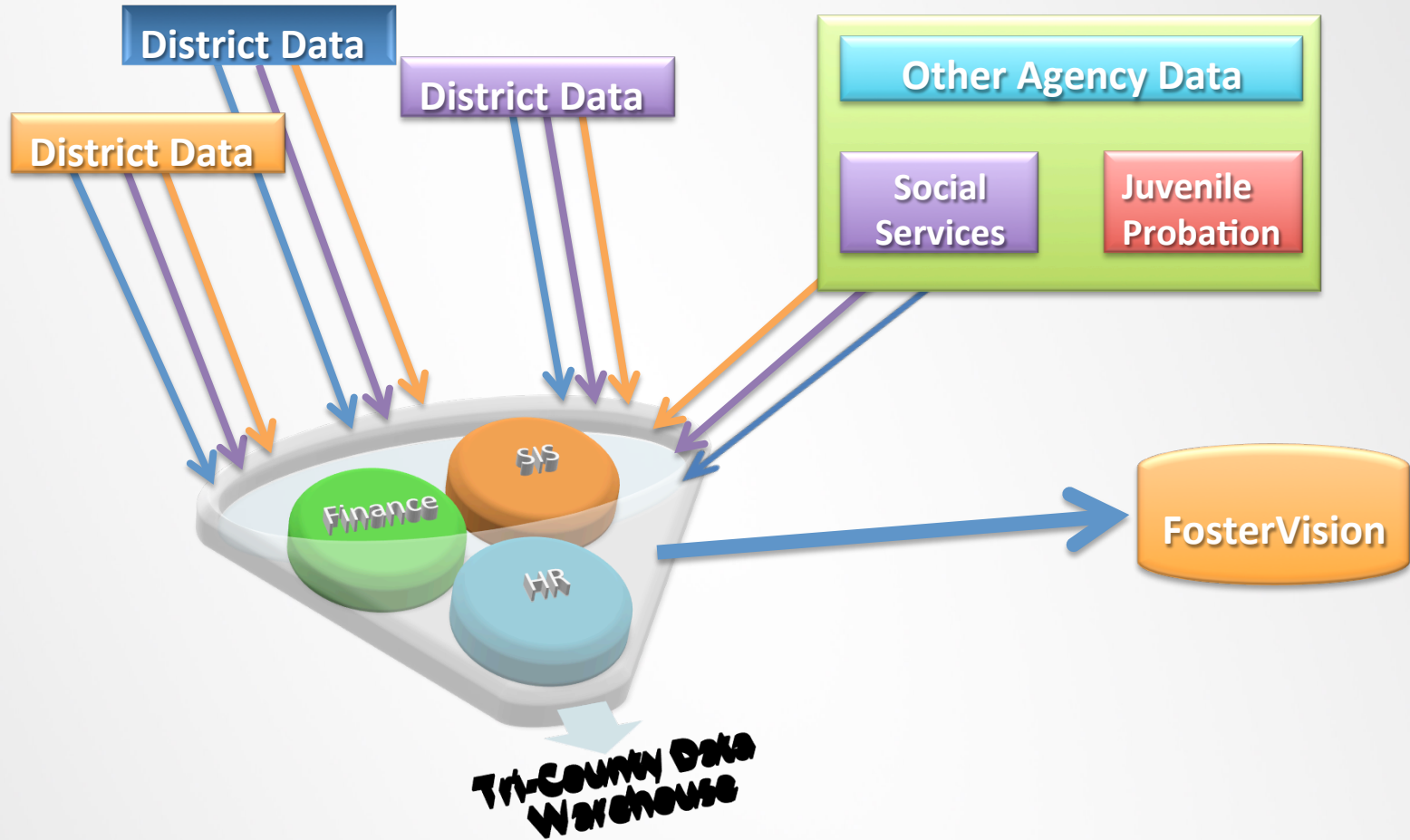
- ◆ Student Population 412,486
- ◆ 39% Free/Reduced meals
- ◆ 34% gap between ethnic groups meeting UC/CSU requirements
- ◆ 37% of Hispanic youth score Proficient or Advanced in ELA on the state test compared to 76% of White students



Silicon Valley Regional Data Trust



SCCOE DataZone



SVRDT Vision

SVRDT envisions a scalable, secure information sharing environment that supports research, policy and practice to improve outcomes for children, families and communities.



SVRDT Goals

1. Build the Secure Information Sharing Environment
2. Connect 66 school districts to the DataZone
3. Develop the legal documents for cross-agency data sharing
4. Define the SVRDT research agenda



Proof of Concept

- DataZone
 - 208,000 students to date
 - 400,000 tri-county enrollment potential
- FosterVision
 - Data flows nightly from JPD and DFCS to DataZone
 - Accessed and used by probation officers, foster youth caseworkers and school services personnel



Changing the Culture & Practice of Data Use

- ◆ FosterVision
- ◆ Impact Justice exploratory research
 - Researching and promoting pathways to equity in the Santa Clara County Juvenile Justice system
- ◆ Multiple Tiered Systems of Support
- ◆ Early Warning Indicators

Building the “Trust” in the Silicon Valley Data Trust

Laura Garnette

Chief Probation Officer, Santa Clara County



Santa Clara County
Office of Education



Building the “Trust” in the Silicon Valley Data Trust

- ◆ Shared philosophy about preventing both harm and net-widening.
- ◆ Clear understanding of what, why and how data will be shared.
- ◆ Understanding of what and why certain data WON'T be shared.
- ◆ Consensus that each of us are responsible for looking for unintended consequences and modifying the system as a result.



Building the “Trust” in the Silicon Valley Data Trust

Risk/Benefit Analysis:

Risks

- ◆ Net-Widening
- ◆ Inappropriate Use of Data
- ◆ Consequences of memorializing circumstances in writing - lose the humanity of the child/family
- ◆ Unintended consequences for parents and siblings.
- ◆ Lose nuance and incremental change



Building the “Trust” in the Silicon Valley Data Trust

Risk/Benefit Analysis:

Benefits

- ◆ Ability to treat child and family holistically.
- ◆ Shared case planning means all supports are working towards similar goals.
- ◆ Keeps youth and families from having to disclose sensitive information – reduces redundancy and possible retraumatizing.
- ◆ Allows for proper “dosage” of treatment and prevents duplication or overserving/underserving – saving both money and providing better treatment.



Building the “Trust” in the Silicon Valley Data Trust

- ◆ Requires a commitment to continually train staff – Probation alone has about 1,000 employees.

From Ideas to Action:

Lets look at this amazing system!!!

Back to Marcy Lauck for a Live demo of the Silicon Valley Data Trust FosterVision and DataZone



Under the Covers

Administration ▾ Teachers ▾ Assessments ▾ **Early Warning ▾** S

Early Warning Student List - High School

District

Santa Clara Unified School District ▾

School

[All Schools]

Bowers Elementary School

Bracher Elementary School

Language Proficiency

English Learner

[All]

Initial Fluent English Proficient

RFP 3+ Yrs Economically Disadvantaged

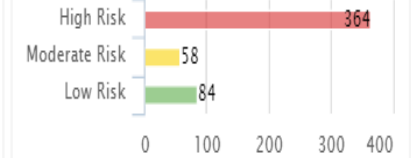
[All]

[All]

Course Outcomes 06-08



Course Outcomes 09-12



Administration ▾ Teachers ▾ Assessments ▾ **Early Warning ▾** Student Search

Cross Domain

District: Santa Clara Unified School District ▾ School: [All Schools] ▾ Grade: P TK ▾ Ethnicity: Asian Black or African American
 Language Proficiency: RFP 3+ Yrs Economically Disadvantaged Foster Youth Homeless Migrant Lunch Status
 English Learner: [All] ▾ RFP 3+ Yrs: [All] ▾ Economically Disadvantaged: [All] ▾ Foster Youth: [All] ▾ Homeless: [All] ▾ Migrant: [All] ▾ Lunch Status: Free Reduced

Related Dashboards

Dashboard	Low Risk	Mod Risk	High Risk
Attendance Short Cycle vs Attendance Long Cycle	2,824	224	23
Attendance Short Cycle	103	218	42
Attendance High Risk	31	56	154
Behavior Short Cycle vs Behavior Long Cycle	3,214	103	23
Discipline Short Cycle	248	17	29
Discipline High Risk	205	24	14
Attendance Short Cycle vs Courses	264	179	484
Attendance Short Cycle	10	12	29
Attendance High Risk	7	7	89
Attendance Short Cycle vs Behavior Short Cycle	3,161	82	8
Attendance Short Cycle	248	17	29
Attendance High Risk	205	24	14
School vs Residence Changes	2,095	457	103
School Mobility	263	64	15
School High Risk	20	13	2
Behavior Short Cycle vs Courses	275	124	533
Discipline Short Cycle	8	8	82
Discipline High Risk	1	1	24

Student List - High School

Student Attendance Long Cycle	Student Attendance Short Cycle	Discipline Short Cycle	Discipline Long Cycle	Suspensions Short Cycle	Suspensions Long Cycle	School Mobility	Home Address Change	Course Outcomes 06-08	Course Outcomes 09-12	Course Credits 09	Course Credits 10	Course Credits 11	Course Credits 12	Classroom GPA (Cumulative)	SBA ELA	SBA Math
82	54	3	3	0	0	0	1	--	34	--	--	200	--	2	0	0
100	98	0	0	0	0	0	0	--	46	--	--	200	--	2	0	0
89	89	2	2	0	0	0	0	--	33	--	94	--	3	2423	2369	
62	89	3	3	1	1	1	0	--	43	--	10	--	0	0	0	
82	84	0	0	0	0	0	0	--	0	--	--	--	148	3	0	0
100	100	0	0	0	0	0	1	--	0	--	--	--	248	2	2379	2315
69	93	1	1	0	0	1	0	--	29	--	63	--	1	2382	2344	
98	100	0	0	0	0	0	0	--	1	--	212	--	3	2466	2499	
98	98	0	0	0	0	0	0	--	1	--	--	0	--	0	0	0
96	100	0	0	0	0	0	1	--	21	--	112	--	2	2497	2425	